

Leadership & Pioneer in Large & Middle Scale SAP Implementations, Migrations & Conversions

Naresh Kumar Rapolu

Nareshkumar.rapolu@gmail.com

Abstract

The following research project has underscored the importance of leadership in large and middle scale SAP implementations, migrations and conversions. Highlighting the SAP implementations, migrations, and conversions has advantaged in skilling the resources, thereby fostering the organisations to render positive outcomes. The incorporation of agile and waterfall technologies and risk management framework has enabled minimising the chance of risk of non-compliance during the phases. Thus, it has fostered valuable insights for the enhancement of success rates. Furthermore, harnessing strategies such as stakeholder engagement along with data extraction and transformation and customisation of code management has rendered positive outcomes for organisations in the context of SAP projects. This has ultimately navigated in transcending towards supporting with better alignment with the business objectives.

Keywords: Leadership and Pioneer, Large and Middle Scale, SAP implementations, migrations and conversions, SAP ERP, Agile and Waterfall Technologies, Risk, Management Framework

I. INTRODUCTION

The research project will provide a nuanced understanding of the vitality of leadership and pioneer in large and middle scale SAP implementations, migrations and conversions. It is evident that in the context of SAP, implementation refers to the setting up of a fresh system in SAP that will be identified from scratch. At the same time, migration will indicate transferring data from a remaining system to a fresh one, The conversion in this segment will specifically underscore in navigating the existing SAP system. This will include an older SAP ERP. The research project will also analyse the approaches required for SAP implementations, migrations and conversions. Furthermore, this will help understand the leadership strategies concerning large and middle scale SAP implementations, conversions and migrations. This will entail rendering best practices that will foster the organisation to refine the core data processes.

II. UNDERSTANDING THE INTEGRATION OF LEADERSHIP AND PIONEER IN SAP IMPLEMENTATIONS, MIGRATIONS AND CONVERSIONS

Integrating leadership and pioneer in large and middle scale SAP implementation is termed to be of paramount importance. This is because it tends to get accustomed to the successful implementation of SAP software within the company. This sets the stage by creating a strategic vision in getting aligned with the SAP implementation in large and middle scale meetings with wider business goals. However, this guides the organisations towards taking strategic objectives that are beyond just technical functionality. At the same time, leadership and pioneer in large and middle scale SAP migrations set the stage in harnessing the expertise and innovative approaches that are used for navigating the organisation with the process of transferring the SAP systems to a fresh version. This is observed often from legacy SAP ERP to SAP S/4 HANA. This indicates that pioneering with fresh methodologies or strategies is used to streamline the

migration process. This is used to attain successful outcomes for the clients¹. SAP migration promotes the best innovation and best practices to optimise efficiency and lower the possibilities of disruptions during the transition. Moreover, the implementation of SAP conversions tends to make the organisation support the programs. These programs discuss the improvement of the skilled resources that help the companies to leverage their operational functions.



Figure 1: Understanding SAP Implementations, Migrations and Conversions

III. DISCUSSING THE APPROACHES IN LARGE AND MIDDLE SCALE SAP IMPLEMENTATIONS, MIGRATIONS AND CONVERSIONS

The approaches needed for observing the large and middle scale SAP implementations, migrations and conversions are termed to be of immense relevance. This is because it has the power to mitigate the challenges that are usually encountered in SAP projects.

Incorporation of Agile and Waterfall Technologies: The incorporation of agile and waterfall technologies. On one hand, the use of agile technologies facilitates adaptive learning and iterative development. It passes through several steps. The first step involves proper planning. The second step contains designing and developing the projects and, at times, contributing to CER. The next step refers to testing and deployment of the projects². Thorough Review retrospectives are other steps that are used for analysing, and thus the cycle continues. This grants the teams to respond to the challenges within the changing environment setting. However, this technology is regarded as an advantageous one concerning large and middle scale projects to mitigate challenges like e complexity that sometimes lead to unforeseen challenges.

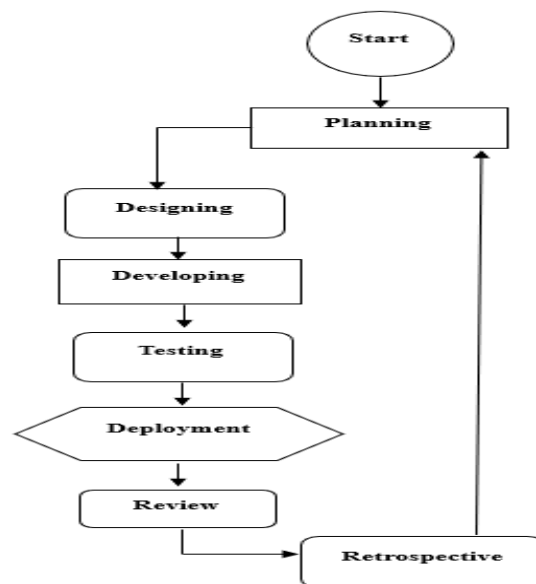


Figure 2: Working Principle of Agile Technology

On the other hand, waterfall technologies foster a curated framework which is utilised for phases to serve with complete clarity upfront. It encompasses several phases. The first phase refers to the gathering of requirements³. The next step involves the design of the system, and the third step contains development. The fourth step portrays testing, and the last phase involves deployment. Every phase is expected to emerge during the project lifecycle to limit the chances of errors.

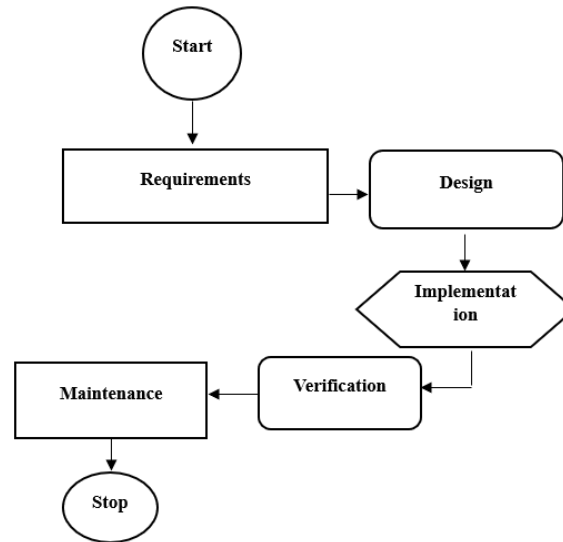


Figure 3: Depicting the Working of Waterfall Technology

Augmentation of Risk Management Framework: The augmentation of the risk management framework has the possibility of getting familiarised with a positive approach. It starts with a comprehensive risk assessment that helps to identify the potential threats at the initial stages. These threats can belong to either technical, operational or organisational domains⁴. However, the incorporation of regular stakeholder engagement emulsifies the alignment on its prioritisation and mitigation strategies. Moreover, getting commemorated with modern tools for the analysis of real-time monitoring has paved the path by catering for a culture of continuous adaptability and responsiveness.

IV. ELUCIDATING THE STRATEGIES FOR LARGE AND MIDDLE SCALE SAP IMPLEMENTATIONS, MIGRATIONS AND CONVERSIONS

The strategies elucidates with positive results in large and middle scale SAP implementations, migrations and conversions in leadership and pioneer context. These strategies are mentioned below.

Stakeholder Engagement: Catering with successful stakeholder engagement gathers the requirements. It tends to respond to the latest concerns⁵. This results in making sure that it renders buy-in throughout the entire process.

Data Extraction and Transformation: The intersection of data extraction and transformation is identified to be of immense relevance. It indicates the development tools in order to extract data from legacy systems⁶. This is used to clean and transform in a format that is aligned with SAP.

Customisation of Code Management: The customisation of code management entails a detailed analysis of the existing custom code in order to predict weaker sections. It helps in requesting for compatibility in SAP conversion in large and middle scale⁷. This results in potential changes required for the new system.



Figure 4: Observing the Strategies within SAP Implementations, Migrations and Conversions

V. CONCLUSION

This research project has portrayed the successful large and middle scale SAP implementations, migrations, and conversions posed to hinge upon the leadership and pioneer segment. Incorporation of leadership and pioneer in SAP implementations, migrations and conversions has been prolific to yield positive outcomes with the best practices and approaches like agile and waterfall technologies and risk management framework. Furthermore, the implementation of strategies such as stakeholder engagement with data extraction and transformation and customisation of code management has paved the path in observing successful leadership and pioneer in large and middle scale SAP implementations, migrations and conversions. This has ultimately benefited the organisations to maintain the sensibility of the data and thus maintain sustainable growth.

Abbreviations and Acronyms

- SAP- Systems, Applications and Products
- ERP- Enterprise Resource Planning
- HANA- High-Performance Analytic Appliance
- CER- Cost Effective Ratio

Units

- Data is measured in bytes
- Time is measured in seconds

Equations

- Cost Efficiency Ratio (CE) = [Total Impact / Total Cost]
- Return-On-Investment (ROI) = [(Net Income / Total Cost) X 100]

REFERENCES

- [1] B. Erkut, "The Emergence of the ERP Software Market between Product Innovation and Market Shaping," *Journal of Open Innovation: Technology, Market, and Complexity*, vol. 4, no. 3, p. 23, Jun. 2018, doi: <https://doi.org/10.3390/joitmc4030023>
- [2] B. Erkut, "What Did SAP Change? A Market Shaping Analysis," *Ssrn.com*, May 26, 2018. <https://papers.ssrn.com/sol3/Delivery.cfm?abstractid=3345848>
- [3] B. Venohr and K. Meyer, "Uncommon common sense," *Business Strategy Review*, vol. 20, no. 1, pp. 38–43, Mar. 2009, doi: <https://doi.org/10.1111/j.1467-8616.2009.00578.x>
- [4] J. C. Stofberg, "Leveraging on experience, risk and control as key determinants to enhance a late-entrant globalisation strategy : the case of the EPI-USE group of companies," *Core.ac.uk*, Nov. 2006, doi: <https://core.ac.uk/download/pdf/43163800.pdf>
- [5] J. Renz, F. Schwerer, and C. Meinel, "openSAP: Evaluating xMOOC Usage and Challenges for Scalable and Open Enterprise Education," *International Journal of Advanced Corporate Learning (iJAC)*, vol. 9, no. 2, p. 34, Aug. 2016, doi: <https://doi.org/10.3991/ijac.v9i2.6008>
- [6] K. Momaya, S. P. A. Rustagi, and A. Chand, "Role of Values in Shaping Strategic Intent for Competitiveness: Learning from a Case of Flagship Firm," *Ssrn.com*, Nov. 20, 2013. <https://papers.ssrn.com/sol3/Delivery.cfm?abstractid=2267032>
- [7] N. Woodcock, A. Green, and M. Starkey, "Social CRM as a business strategy," *Journal of Database Marketing & Customer Strategy Management*, vol. 18, no. 1, pp. 50–64, Mar. 2011, doi: <https://doi.org/10.1057/dbm.2011.7>