

Universal point of evaluation to accentuate the access to vision and access to balance, pretext the existence of driving forces prevailed in environment for succeeding towards balanced and secured position on the surface of the earth while on cyclic in nature.

### Yalla Venkata Chalapathi Rao

PhD hc  
Independent Researcher

**Abstract:**

In the process of ascertaining universal balancing features and accentuate the available limit of access for securing stable standing position in pretext of vision of access and access to balance, considering the cyclic nature of the earth.

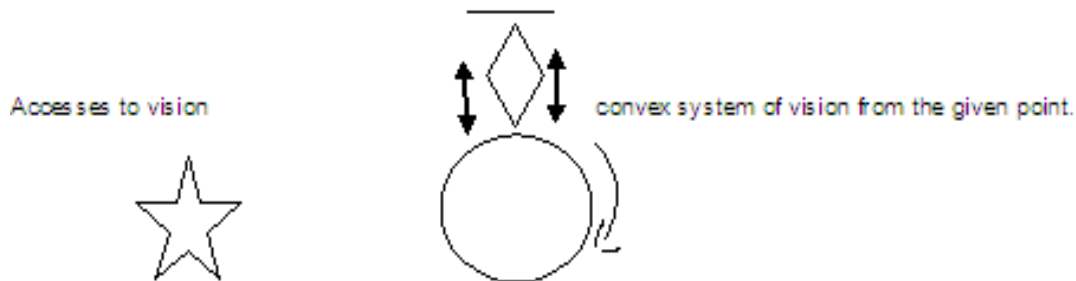
Vision of eyes is the point of view towards the sky will be watching narrowly and it will end at both the sides simultaneously. The space of viewing is the reflection of light on the rotating earth.

Evolution of controls in modern timelines, emergence of Governing bodies, hierarchies.

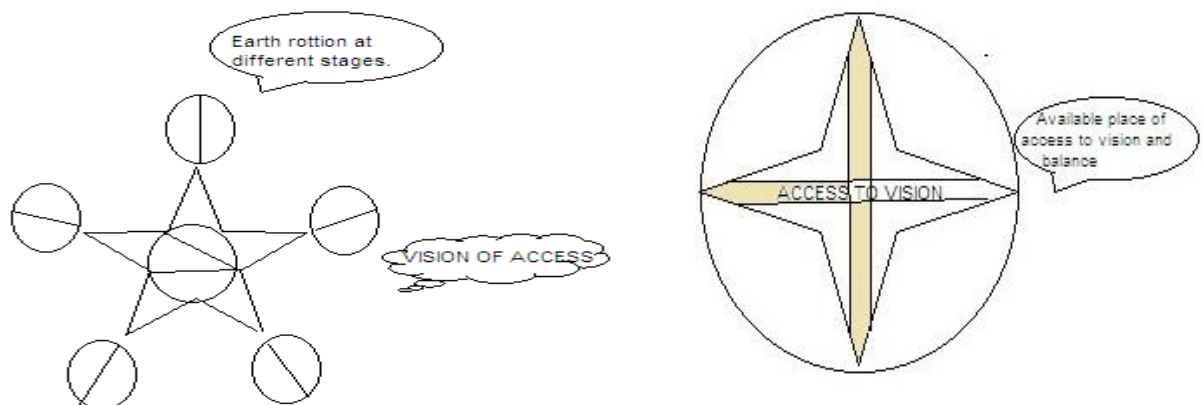
#### Chapter 1

##### Access to Vision and access to balance

1. Access of vision is narrow and it will end at both the points simultaneously.

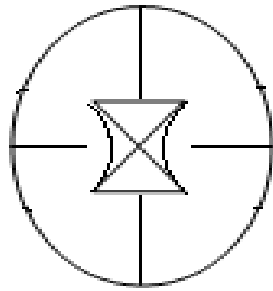


2. Reflection of energy is the driving force converted into the directions is the arrival of the time lines. Diagram shows earth rotation on its own axis, vision of single point of view will access both the sides forward ward and behind but reachable access is only in parallel direction since the sides will be changing as for to the earth's movements..



3. Access to balance is limited to the radius of standing position.

Concave system of Vision.

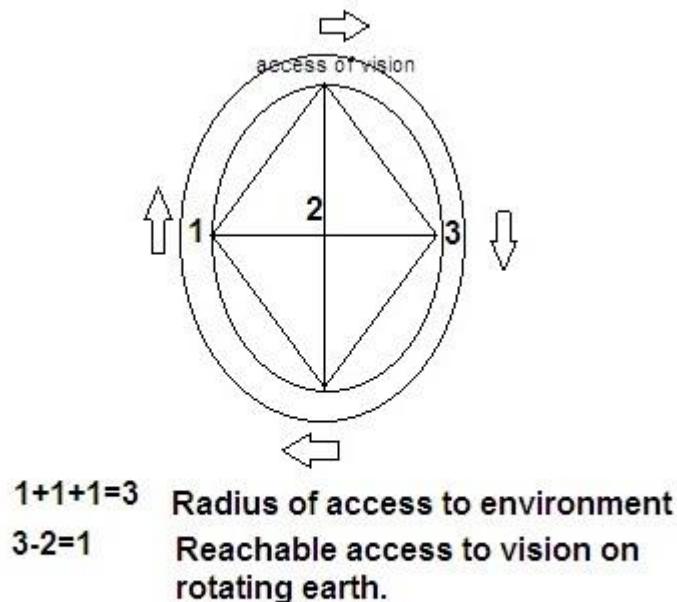


4 Access to environment is the moving standard balanced position on a rotating earth and limited to radius and vision. The available space of radius is not the same always to the available space to reachable access to vision is always changes as per the movements of the earth.



Access to vision and the access to balance are simultaneous in implementation and process for securing stable moving position in a vision able place called the place of living.

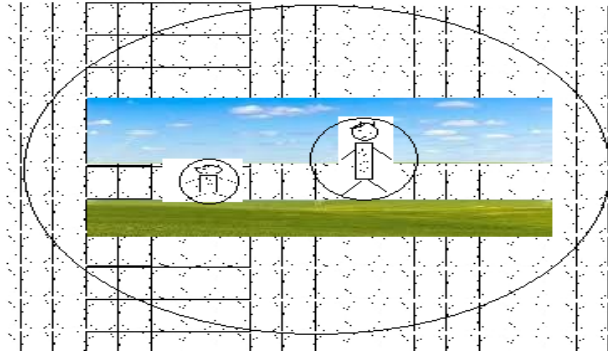
The following diagram shows the three point measurements and vision of access reachable is one point.



5. The directional changes due to access to vision on the rotating earth for securing balanced position will cause disturbances in the environment which is cyclic in nature.

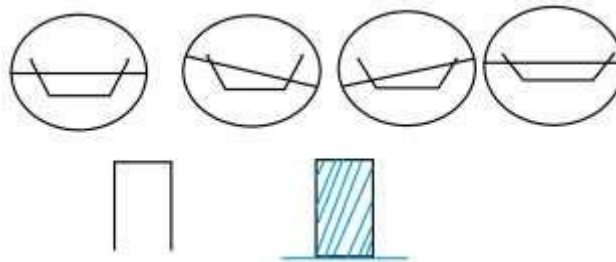
The physical and psychological disturbances in living and non living objects are subjected as Day and night changes, seasonal changes, occurrence of eclipse, changes in memory power, changes in gain and loss of energy, movements of tidal waves. .

On the rotating earth the thinking time lines reaches to the same point within in the same actual time called the sense of thinking point of time. If watching towards forward position one can see the sky or any object and at the same time, vision towards is the radius of standing position on the earth is limited to vision to the diameter of standing position.

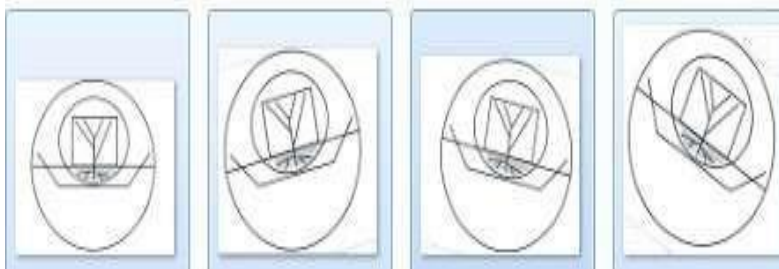


6. This is the rare consequences of measurements of vision from where ever watching is like that of shadow and always in a balancing form of floating manner since the body is having liquid in the form of water and blood in the body while standing on a rotating earth.

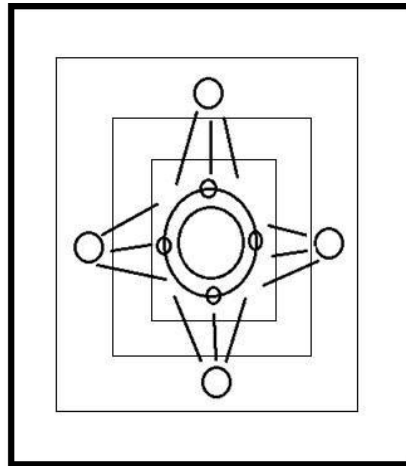
Moments of a boat and the balancing positions in the water.



Moment of the objects on the earth.



7 Planning of time lines should be within the reaching limit of the time otherwise it will get repel. Magnetic action driving forces applies on physiological factors of attraction in objects in rotation and in cyclic form as per the environment requirement.



**Chapter 2**

**Evolution of controls in modern times.**

Co related activities for co existence with energy reflections are the driving force for directions followed by planning. Planning of the time lines should be in the form of parallel lines for certain time period in a cycle manner to be consistent with the environmental changes accordingly.

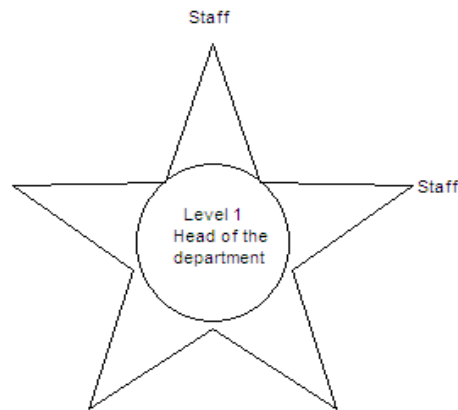
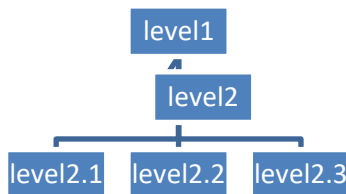
- 1 Driving forces considered as head of the concern section.
- 2. Balancing powers are available source and resources.
- 3. Governing bodies frames rules and regulations

Timelines in the form of circular activity, hierarchy.

Driving Force are the Governing bodies (balancing power)

Modern Hierarchy

Environmental hierarchy



**CONCLUSION.**

Rules and regulations are initiatives framed as the driving forces formed by governing bodies’ acts as the balancing power of mechanism.

Limited thinking within the reachable level as per the light naturally available space and resources gives better results.

Going against the natural timelines causes disturbances. Step by step environmental check-up required to face the future developments and consequences.

**REFERENCES:**

1. Yalla Venkata Chalapathi Rao. "Objectual understanding of moments of earth and relevant systems." International Journal of Advance Research, Ideas and Innovations in Technology

2. Yalla Venkata Chalapathi Rao. Analyzing the variance in environmental changes, its impact, and solution process in Objectual understanding of moments of earth and relevant systems, International Journal of Advance Research, Ideas and Innovations in Technology,
3. Yalla Venkata Chalapathi Rao. Objectual understanding of the moments of the Sun and Moon, The Symbological Approach, International Journal of Advance Research, Ideas and Innovations in Technology
4. Yalla Venkata Chalapathi Rao. Universal Environment and Empowerment for Sustainability Publisher: Elivapress
5. Yalla Venkata Chalapathi Rao Solar system and the coherence arbitrary features, relativity of gravity and infinity in the planetary forms of Universal environment and empowerment towards sustainability. International Journal of Innovative Research in Engineering & Multidisciplinary Physical Sciences.