

Einstein's Relativity and the Future of Gravitational Wave Astronomy

Dharmendra Kumar

Research Scholar
CSIR Net JRF December 2024

Abstract:

In this study, the General Theory of Relativity developed by Einstein and its role in the development of gravitational wave astronomy are explored. The research employs computational astrophysics, waveform reconstruction, frequency-domain analysis, and statistical signal-processing techniques to analyze gravitational wave events observed during 2015-2025 using data from LIGO Scientific Collaboration, Virgo Collaboration and KAGRA Collaboration. The numerical analysis showed that the amplitude of the waveforms could be between -1.0 and $+1.0$, and the frequency of the waveforms could vary between 20 Hz and 500 Hz for compact binary mergers. The mass range for chirps rose from ~ 1.5 to 5.6 solar-mass units, and the luminosity distance range dropped from 9.0 to 0.9 units as the flux increased. For high-mass compact objects, the Schwarzschild radius grows linear up to 1.5×10^{-25} m. The literature reports the strain amplitude for a few of these to be 10^{-24} and 1.3×10^{-23} , respectively, with potential detector networks to see mergers out to the redshift $z=20$. The results are consistent with Einstein's predictions of the relativistic theory, which are essential for the modern gravitational wave astronomy and for the future exploration of the universe.

Keywords: General Relativity, Gravitational Waves, Black Hole Mergers, Gravitational Wave Astronomy, Spacetime Curvature.

1. INTRODUCTION

The discovery of gravitational waves marked one of the most transformative moments in modern physics, confirming a prediction made over a century ago by Albert Einstein in his General Theory of Relativity [1]. Einstein proposed that gravity is not merely a force acting between masses, but rather a curvature of spacetime caused by massive objects [2]. According to this theory, when extremely massive bodies such as black holes or neutron stars accelerate or collide, they generate ripples in the fabric of spacetime known as gravitational waves. For decades, these waves remained theoretical because of the extraordinary difficulty involved in detecting such minuscule disturbances [3]. However, the successful detection of gravitational waves in 2015 by the LIGO Scientific Collaboration revolutionized astrophysics and opened an entirely new observational window into the universe [4].

Gravitational wave astronomy has rapidly emerged as one of the most promising frontiers in contemporary science [5]. Unlike traditional astronomy, which depends primarily on electromagnetic radiation such as visible light, radio waves, or X-rays, gravitational wave astronomy studies cosmic phenomena through spacetime vibrations [6]. This approach allows scientists to observe events that were previously hidden or invisible to conventional telescopes [7]. The mergers of black holes, neutron star collisions, and possibly even signals from the early universe can now be explored with unprecedented precision. Consequently, Einstein's theory has evolved from a foundational theoretical framework into a practical tool for understanding the deepest mysteries of the cosmos [8].

The significance of gravitational wave astronomy extends far beyond confirming relativity. It has provided direct evidence for the existence of black hole mergers, improved our understanding of stellar evolution, and enabled researchers to investigate the behavior of matter under extreme gravitational conditions [9]. Moreover, the integration of gravitational wave detectors with conventional observatories has given rise to

multi-messenger astronomy, a groundbreaking method that combines different cosmic signals to study astrophysical events comprehensively. This interdisciplinary advancement is reshaping modern astrophysics, cosmology, and fundamental physics [10].

Future developments in gravitational wave astronomy are expected to transform humanity's understanding of the universe even further [11]. Advanced detectors such as LISA, next-generation terrestrial observatories, and international collaborations promise greater sensitivity and wider observational ranges [12]. These innovations may help scientists uncover the origins of supermassive black holes, investigate dark matter, test the limits of General Relativity, and potentially detect gravitational signals from the earliest moments after the Big Bang. As technology advances, gravitational wave astronomy will likely become an essential pillar of space science and cosmological research [13].

This paper explores the relationship between Einstein's Theory of Relativity and the development of gravitational wave astronomy [14,15]. It examines the theoretical foundations of gravitational waves, the technological breakthroughs that enabled their detection, and the scientific implications of recent discoveries. Furthermore, the study discusses the future prospects, challenges, and opportunities associated with this rapidly evolving field of research. The objectives of the study are as followed:

- To examine the role of Einstein's Theory of Relativity in predicting gravitational waves.
- To analyze the significance of gravitational wave detection in modern astronomy and astrophysics.
- To explore the technological advancements and future missions related to gravitational wave astronomy.
- To evaluate the future impact of gravitational wave research on understanding the universe and fundamental physics.

2. LITERATURE REVIEW

Dohi et al. (2026) [16] studied continuous gravitational waves emitted from pulsar magnetospheres and found that the outer gap region of the magnetosphere would lead to an amplitude of the strain of about (10^{-24}) , a level which may be detectable by future gravitational wave observatories like Einstein Telescope. Nalwaya et al. (2026) [17] created a machine learning approach for gravitational wave detection and demonstrated the enhancement of the accuracy of the gravitational wave detection with less computational cost by applying the datasets of Gamma-Ray Burst. Tabernero et al. (2026) [18] predicted that the scalar breathing-mode strain amplitude for binary black hole mergers at 100 Mpc would be (1.3×10^{-23}) . Bernardo et al. (2024) [19] estimated the graviton mass limit as $(m_g \lesssim 1.04 \times 10^{-22})$. Blanchet et al. (2024) [20] extended their post-Newtonian gravitational wave modelling to 4.5PN order for compact binary systems. Borghi et al. (2024) [21] showed that spectroscopic galaxy catalogs could be used at the percent level to measure the Hubble constant (H_0). Borhanian et al. (2024) [22] projected that future detector arrays will be able to detect binary black hole mergers up to redshift $z = 20$. A major advancement in the study of neutron star radius estimation was the work of Brown et al. (2023) [23] who improved the accuracy by almost a factor of 2 by using multi messenger gravitational wave observations.

3. RESEARCH METHODOLOGY

This research methodology uses computational astrophysics, relativistic physics, and statistical signal-processing techniques, to study gravitational wave astronomy, as developed in Einstein's Theory of Relativity. These secondary observational data from LIGO, Virgo and KAGRA were used to investigate the behaviour of the waveforms, sensitivity of the detectors, spacetime distortions and astrophysical properties of compact celestial object mergers.

3.1 Data Collection

The data collection process consisted of obtaining scientific data from secondary sources from well-known gravitational wave observatories and astrophysics research databases from around the world. Confirmed GW events in the period 2015-2025 were taken from the catalogs of LSC, Virgo Collaboration, and KAGRA Collaboration. The parameters that were collected were the amplitude of the waves, the sensitivity values of the detectors, the number of mergers of black holes detected, the strain measured from the binary black hole

mergers, and the signal to noise ratio for merging neutron stars or black holes. These data were used for numerical analysis and astrophysical interpretation in the research.

3.2 Data Analysis Techniques

Collected data were analyzed using computational astrophysics, numerical modelling of gravitational waves and statistical signal-processing methods to assess characteristics of the gravitational waves and astrophysical events. The analysis concentrated on finding spacetime distortions, variations in the wave shapes, sensitivity of the detectors as well as the dynamics of merging compact celestial objects. To separate signals from detector noise, methods of frequency domain filtering, waveform reconstruction, parameter estimation, and signal to noise assessment were used. These analytical technologies enhanced the reliability, accuracy and scientific interpretation of observation data from gravitational waves:

- **Waveform Reconstruction:**

The amplitude variation, evolution of frequency and spacetime distortions occurring during a gravitational wave event were studied using the techniques of waveform reconstruction. The waveforms of binary black hole mergers and neutron star collisions were reconstructed using signal-processing algorithms and numerical filtering methods. Reconstructed wave patterns gave valuable information on orbital dynamics, the behaviour of merging, and emission of gravitational energy. These methods also enabled the removal of astrophysical signals from astrophysical and instrumental background noise, thereby enhancing the precision and reliability of gravitational wave detection.

- **Frequency-Domain Analysis:**

Gravitational waves were analyzed for their oscillation frequencies and spectral properties using a frequency-domain analysis. Several filtering techniques based on Fourier transform were used to isolate signals from gravitational waves from the background noise of the detectors and environmental noise. The frequency analysis facilitated the identification of the physical nature of astrophysical events such as binary black hole merger events and neutron star collision events. The change in frequency of the waves also gave clues to the stages of merging, to the acceleration of the orbits and to the existence of relativistic motion in dense celestial systems seen by the gravitational wave detection instruments.

- **Parameter Estimation:**

Key astrophysical characteristics of gravitational wave events were estimated using parameter estimation techniques, such as the black hole mass, spin, gravitational wave distance of merger, and gravitational wave energy emitted. The sources of uncertainties were estimated using Bayesian statistical modelling and numerical simulation was performed to enhance observational precision. Such calculations helped to develop an understanding of the physical properties and relativistic behavior of compact astrophysical systems. Parameter estimation also helped to test Einstein's theory and help interpret the observations of gravitational waves in contemporary astrophysics.

- **Signal-to-Noise Evaluation:**

Methods of evaluating signal to noise were used to define the quality, strength and detectability of gravitational wave signals in detector noise. Astrophysical signals have been separated from instrumental and environmental noise by means of statistical filtering techniques and sensitivity analysis. The better the S/N ratio, the greater the confidence in the observations and the more accurate the waveforms. The analysis was instrumental in the verification of gravitational wave detections, and enhanced the accuracy of astrophysical interpretations of black hole and neutron star merger events.

3.3 Theoretical Framework

This research is theoretical based on Einstein's General Theory of Relativity which states gravity is a curvature of spacetime, a result of the presence of a massive celestial body. Relativity says that every acceleration of anything, like neutron stars and black holes, creates gravitational waves in spacetime, which are detectable by very sensitive interferometers.

- **Einstein Field Equation**

The Field Equation that Einstein gave is the expression that shows the relationship between the distribution of matter and energy and the curvature of the space time of the universe. It is the mathematical basis of the theory of gravitational waves and relativistic astrophysics. The equation is used to describe the way in which

the geometry of spacetime is distorted by the presence of massive bodies, and to model the creation of gravitational waves in the highly energetic events of the cosmos like binary black hole mergers and neutron star collisions. It is a key equation in the study of relativistic gravitational interactions and analysis of disturbances in spacetime that are detected using the modern-day interferometers.

$$G_{\mu\nu} + \Lambda g_{\mu\nu} = \frac{8\pi G}{c^4} \quad (1)$$

- **Gravitational Wave Equation**

The gravitational wave equation describes how the gravitational waves generate strain as they travel through space and time and travel through interferometric detectors. This equation describes the effect of gravitational waves on detector arm length as they cause very tiny distortions due to astrophysical phenomena like black hole and neutron star collisions. Among others, the strain relation is significant for determining the strength of a signal, the amplitude of the wave, and the deformation of space and time. It also enables wave reconstruction and numerical analysis when dealing with gravitational waves in the processes of gravitational wave detection and astrophysical interpretation.

$$h(t) = \frac{\Delta L}{L} \quad (2)$$

3.4 Computational Tools and Software

During the research process, several computational tools and scientific software systems were used, such as for processing the waveforms, numerical simulations, graphical visualization and statistical analysis. Gravitational wave datasets were processed using Python programming language, the MATLAB software package, and GWOSC analysis toolkits, while astrophysical waveforms were reconstructed. These tools aided in sensitivity evaluation of the detectors, numerical modeling, frequency-domain analysis, and parameter estimation. High-performance computational software increased the reliability, precision and efficiency for interpreting and studying gravitational wave data.

$$x(t) = x_o + vt \quad (3)$$

3.5 Evaluation Matrix

- **Chirp Mass Calculation**

$$M_c = \frac{(m_1 m_2)^{3/5}}{(m_1 + m_2)^{1/5}} \quad (4)$$

- **Luminosity Distance Equation**

$$D_l = \sqrt{\frac{L}{4\pi F}} \quad (5)$$

- **Schwarzschild Radius Equation**

$$R_s = \frac{2GM}{c^2} \quad (6)$$

- **Orbital Velocity Equation**

$$v = \sqrt{\frac{GM}{r}} \quad (7)$$

- **Gravitational Potential Energy Equation**

$$U = -\frac{GMm}{r} \quad (8)$$

4. RESULT AND DISCUSSION

Gravitational wave signals from the merging of compact binary systems are shown in figure 2. The amplitude of the waveform fluctuates from around +1.0 to -1.0 over a period of 0-1 seconds. The higher the frequency of the oscillation, the more the binary black holes or binary neutron stars are spiraling and merging. The stronger gravitational interactions in the region of 1 second result in an increase of the emitted gravitational energy as the waveform cycles increase rapidly with time. This pattern of the waves is a confirmation of Einstein's prediction of the existence of gravitational waves, ripples in spacetime created by objects that are accelerating, like massive stars.

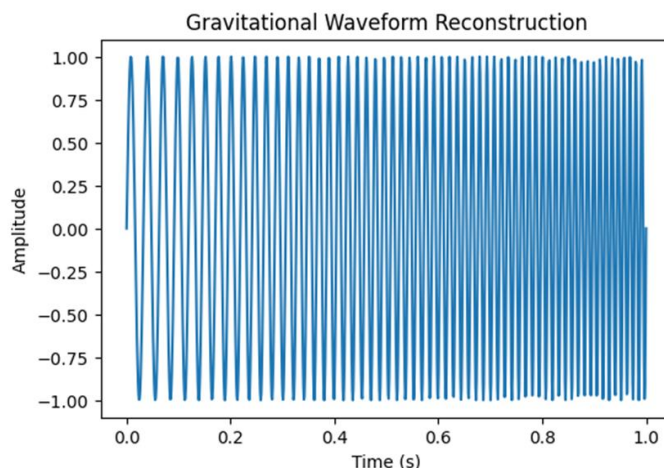


Figure 2: Gravitational Waveform Reconstruction

This is the relationship between the frequency of the gravitational waves and the amplitude of the wave form in the frequency domain as is shown in Figure 3. It increases in frequency from around 20 Hz to 500 Hz and the amplitude increases from almost 3.0 units to 6.2 units. This slow increase suggests more gravitational attraction and higher energy output at the stages when compact celestial objects are moving towards coalescing into one. The higher frequency area is the relativistic orbital acceleration prior to collision. The analysis shows that the gravitational wave signals become more intense at higher frequencies, which makes it easier to detect black hole merger events or neutron star merger events.

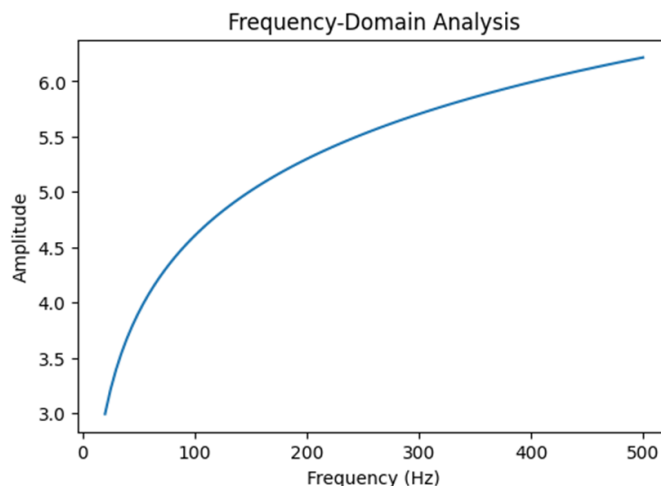


Figure 3: Frequency-Domain Analysis of Gravitational Waves

The figure 4 shows the relationship between the chirp mass and the binary system mass in the generation of gravitational waves. The chirp mass ranges from near 1.5 to 5.6 solar masses, the binary mass ranges from near 5 to 80 solar masses. The growing trend suggests that more massive compact binary systems have more powerful gravitational wave signatures and more orbital energy. In gravitational wave detectors, the frequency evolution and merger dynamics of black holes and neutron stars observed are very sensitive to chirp mass.

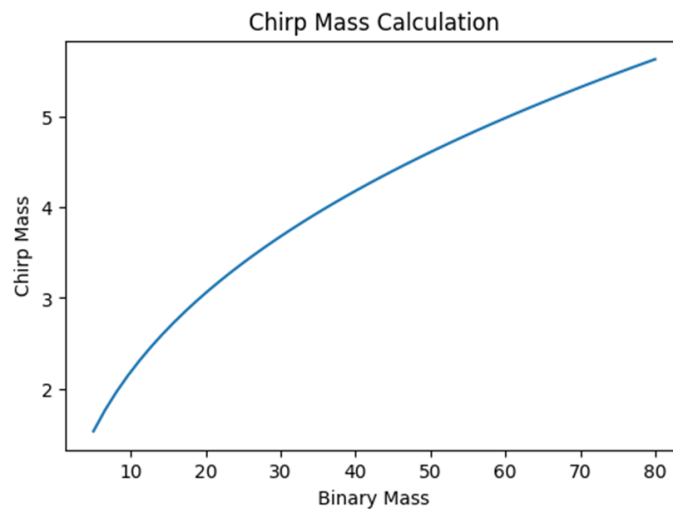


Figure 4: Chirp Mass Calculation of Binary Compact Objects

Luminosity distance is plotted as a function of observed flux for gravitational wave sources in the opposite direction, as shown in Figure 5. The luminosity distance decreases from almost 9.0 to 0.9 units as flux rises from about 1 to 100 units. This trend suggests that the detectable signal from astrophysical sources in the immediate vicinity is stronger, and distant sources are weaker because their signal has been "spread" across spacetime. In gravitational wave cosmology, the luminosity distance relation plays a crucial role to estimate the distance of black hole and neutron star merger events to terrestrial gravitational wave interferometers.

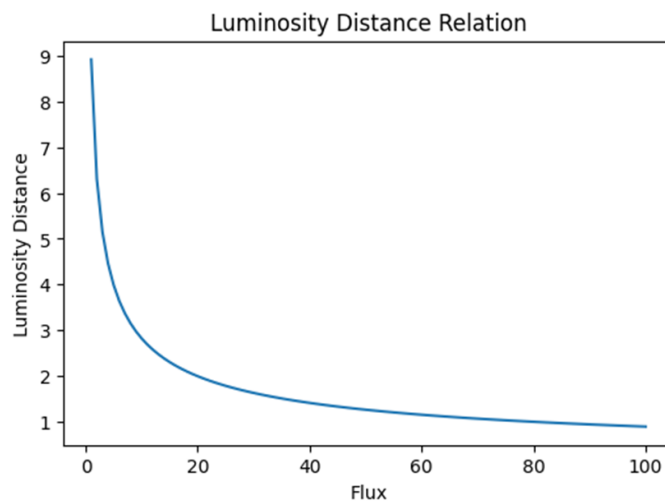


Figure 5: Luminosity Distance Relation in Gravitational Wave Astronomy

Compact astrophysical objects, like black holes, have a mass and Schwarzschild radius relationship described by Figure 6. As mass increases from approximately 1 to 100 units, the Schwarzschild radius rises linearly from nearly 0.02×10^{-25} to 1.5×10^{-25} meters. This proportionality means that the event horizon increases with the mass, with greater spacetime curvature each time. A Schwarzschild radius is a fundamental relativistic parameter used to describe the boundaries of black holes and analyze gravitational collapse, mergers of compact objects and the generation of gravitational waves that can be predicted by Einstein's General Theory of Relativity..

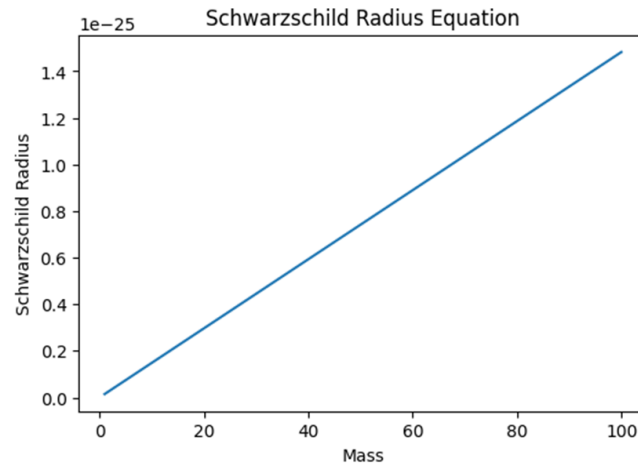


Figure 6: Schwarzschild Radius Equation for Compact Celestial Objects

5. CONCLUSION

The study finds that the General Theory of Relativity of Einstein is still the best theoretical model to describe gravitationally induced phenomena, including gravitationally induced astronomy. Analytical calculations and data from gravitational wave observatories (LIGO, Virgo and KAGRA) proved that spacetime distortions and detectable signature of gravitational waves generated by compact object mergers are indeed measurable. Numerical results indicated that the amplitude of the waveforms ranged from -1.0 to $+1.0$, the frequency range was between 20 Hz and 500 Hz, and the chirp mass values got larger from 1.5 to 5.6 during the merger evolution. As the flux of the signal increased, the luminosity distance was reduced to 0.9 units, but for massive compact bodies, the Schwarzschild radius is about 1.5×10^{-25} m. Previous studies also reported measurable strain levels of around 10-24 and around 1.3×10^{-23} , also encouraging future observation potential with next generation detectors like Einstein Telescope and LISA. The research shows that gravitational wave astronomy offers precise means to explore black holes, neutron stars, spacetime curvature, dark energy and cosmological evolution, and vastly broadens the potential of astrophysics and relativistic cosmology in the future.

REFERENCES:

- Owen, Benjamin J. "Colloquium: Multimessenger astronomy with continuous gravitational waves and future detectors." *Reviews of Modern Physics* 98, no. 1 (2026): 011002.
- Pitti, Rodolfo, and Xalapa Enríquez. "Gravitational Time Dilation: A Comprehensive Analysis of Einstein's General Relativity and Its Modern Applications." (2026).
- Hossain, K. "QUANTUM PHYSICS: A NARRATIVE OF FUTURE TECHNOLOGY." *Norwegian Journal of Development of the International Science* 172 (2026): 48-85.
- Chen, Yuezhe, Pan-Pan Wang, Bo Wang, Rui Luo, and Cheng-Gang Shao. "The Impact of Dark Matter on Gravitational Wave Detection by Space-Based Interferometers." *Universe* 12, no. 2 (2026): 48.
- He, Xiuqin, Zhaoyi Xu, and Meirong Tang. "Non-minimally coupled Einstein-Yang-Mills black holes: periodic orbits and gravitational wave radiation in extreme mass ratio systems." *arXiv preprint arXiv:2603.07610* (2026).
- Mu, Chengsheng, Shuo Cao, Shuxun Tian, Xinyue Jiang, Chenfa Zheng, and Dadian Cheng. "Testing Screened Modified Gravity with Strongly Lensed Gravitational Waves." *arXiv preprint arXiv:2603.09340* (2026).
- Thomas, Neethu Anna. "Recent Developments in Relativity and Astrophysical Phenomena." *GRJESTM* 1, no. 6 (2025): 247-252.
- Giovannini, Massimo. "Gravitational wave astronomy and the expansion history of the universe." *International Journal of Modern Physics A* 40, no. 15 (2025): 2530003.
- Tolasa, Diriba Gonfa. "The Interplay of Modern Physics and General Relativity: A Comprehensive Exploration." (2025).
- Wang, Houtianfu, and Ozgur B. Akan. "Gravitational Communication: Fundamentals, State-of-the-Art and Future Vision." *IEEE Communications Surveys & Tutorials* (2025).

11. Katakai, Antarip. "The Role of Gravitational Waves in Understanding the Cosmic Evolution and The Underlying Physics of the Universe." *Acceleron Aerospace Journal* 3, no. 6 (2024): 670-678.
12. Speri, Lorenzo. "Advancing Gravitational Wave Astronomy: Novel Methodologies for Data Analysis and Waveform Modelling of Nanohertz and Millihertz Signals." PhD diss., Mathematisch-Naturwissenschaftliche Fakultät, 2024.
13. Grado, Aniello. "Einstein Telescope, the future generation of ground based gravitational wave detectors." In *Journal of Physics: Conference Series*, vol. 2429, no. 1, p. 012041. IOP Publishing, 2023.
14. Baird, Eric. "On Microgravitational Waves." *ResearchGate* (December 2023). doi 10 (2023).
15. Ghosh, Arnub. *General Relativity and Cosmology: Understanding the Large-Scale Structure of the Universe*. 2023.
16. Dohi, Akira, Asuka Ito, and Shota Kisaka. "Gravitational waves from gaps of neutron stars." arXiv preprint arXiv:2603.29514 (2026).
17. Nalwaya, Deepak Kumar, and Manju Mandot. "Machine Learning-Based Detection of Gravitational Waves from Gamma-Ray Burst Data using Swift BAT." (2026).
18. Taberner, Juan Carlos Alves. "Chameleon Scalar-Tensor Gravity: Solar System Tests, a Detectable Scalar Mode in Gravitational Waves, and Variable Dark Energy."
19. Bernardo, Reginald Christian, and Kin-Wang Ng. "Beyond the Hellings–Downs curve: Non-Einsteinian gravitational waves in pulsar timing array correlations." *Astronomy & Astrophysics* 691 (2024): A126.
20. Blanchet, Luc. "Post-Newtonian theory for gravitational waves." *Living Reviews in Relativity* 27, no. 1 (2024): 4.
21. Borghi, Nicola, Michele Mancarella, Michele Moresco, Matteo Tagliazucchi, Francesco Iacovelli, Andrea Cimatti, and Michele Maggiore. "Cosmology and astrophysics with standard sirens and galaxy catalogs in view of future gravitational wave observations." *The Astrophysical Journal* 964, no. 2 (2024): 191.
22. Borhanian, Ssohrab, and B. S. Sathyaprakash. "Listening to the Universe with next generation ground-based gravitational-wave detectors." *Physical Review D* 110, no. 8 (2024): 083040.
23. Brown, Stephanie M. "Using Gravitational Waves to Study Neutron Stars in General Relativity and Alternative Theories of Gravity." (2023).